



Palmeira Avenue

Hove, BN3 3GF

FOSTER
& CO.

Palmeira Avenue

Hove, BN3 3GF

£3,250 Per month

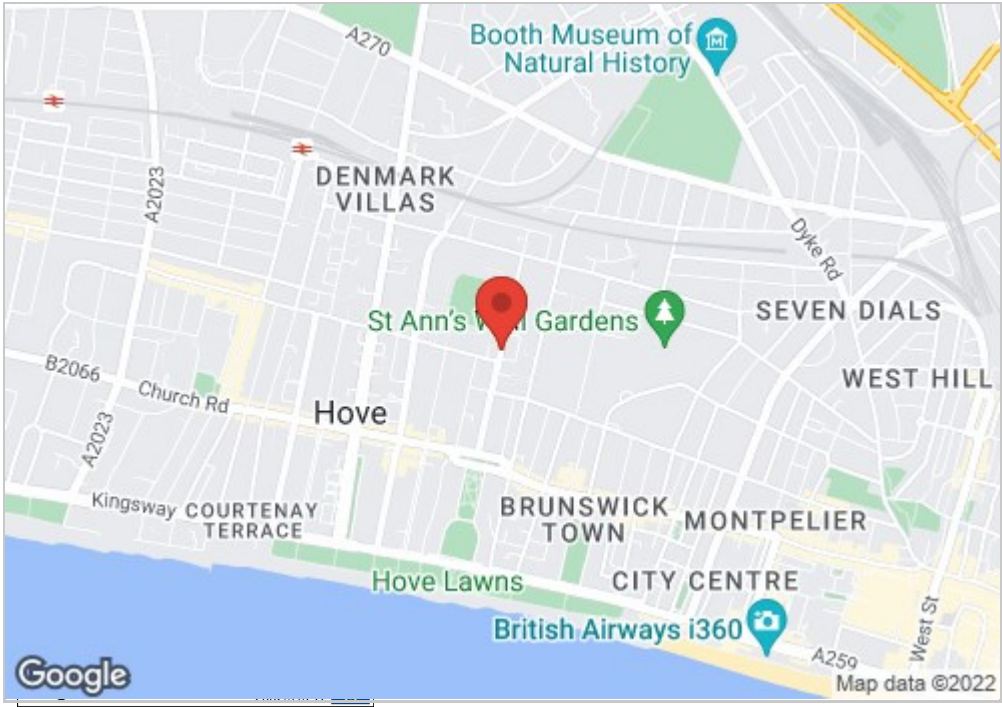
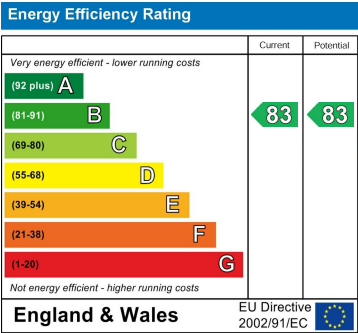
Situated in the heart of Hove, this stylish and luxurious duplex penthouse apartment occupies the third and fourth floors of Verano, a modern development completed in 2015. The apartment enjoys an East facing balcony and west facing terrace on the third floor as well as East and West facing terraces on the fourth floor, giving this home spectacular natural light and spacious outdoor areas, ideal for relaxing and entertaining. Two spacious reception rooms, three well proportioned bedrooms and three bathrooms (two-en-suite).

The property is finished to a very high specification throughout, including walnut flooring, bespoke Italian wardrobes in each bedroom and German kitchen with premium appliances and corian worktops. The eco-conscious design includes an energy efficient boiler and underfloor heating on both floors. The apartment also benefits from having its own secure allocated parking space within the underground garage.

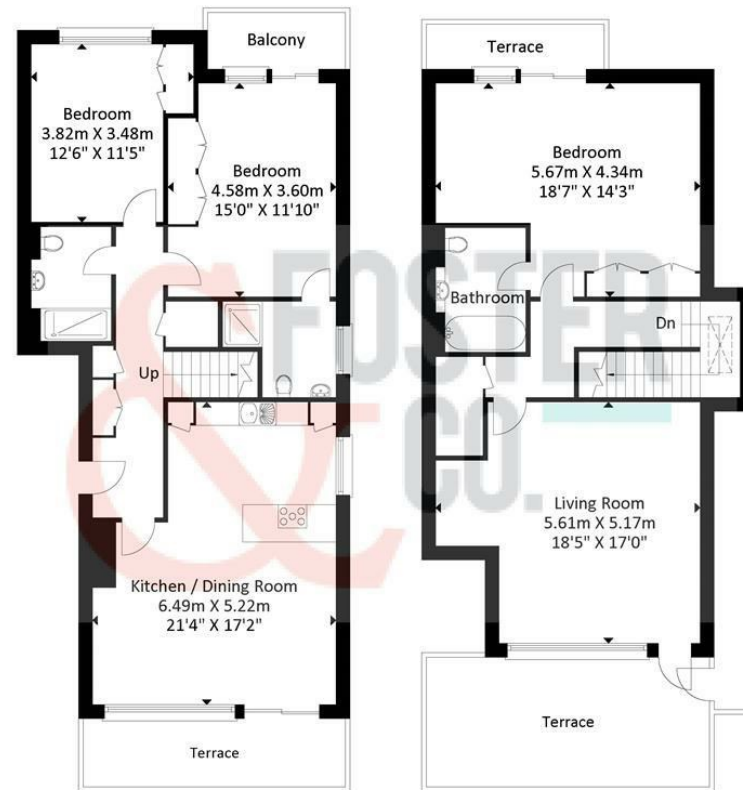
With outstanding views, Verano is ideally located in the picturesque and wide tree-lined Palmeira Avenue. St Anne's Well Gardens is close by, along with Hove and Brighton mainline railway stations, offering fast and direct services to London. Located perfectly to enjoy the best of Hove's shopping and dining, with a range of boutique restaurants on Church Road as well as the beautiful Hove promenade being just a short walk away, this apartment offers a quality and refined lifestyle.

Council tax band F
12 month AST
No pets

- Modern Third and Fourth floor duplex penthouse apartment
- Stunning Living Room with large terrace
- Three bedrooms
- Lift
- Central Hove location
- Spacious open-plan kitchen and dining room
- Three bathrooms, including two en-suite
- Balcony and three terraces.
- Secure underground car parking



Palmeira Avenue, Hove



3rd Floor
Approximate Floor Area
858.96 sq ft
(79.80 sq m)



4th Floor
Approximate Floor Area
721.18 sq ft
(67.00 sq m)

Approximate Gross Internal Area = 146.80 sq m / 1580.140 sq ft
Illustration for identification purposes only, measurements are approximate, not to scale.
Copyright GDImpact 2018

